



RÉPUBLIQUE
FRANÇAISE

*Liberté
Égalité
Fraternité*



DATAVIZ TRAVERSÉES

Université d'été 2023 - 29 Août 2023

Mathieu Rajerison - CEREMA

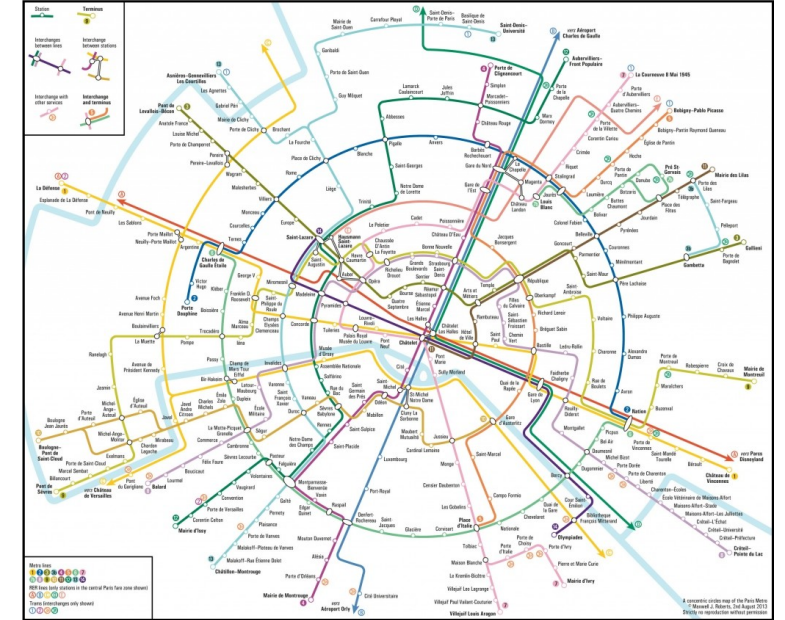
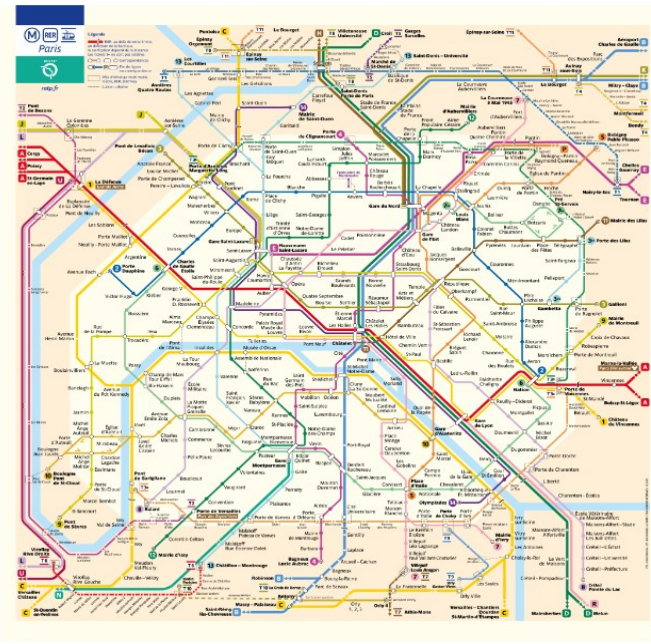
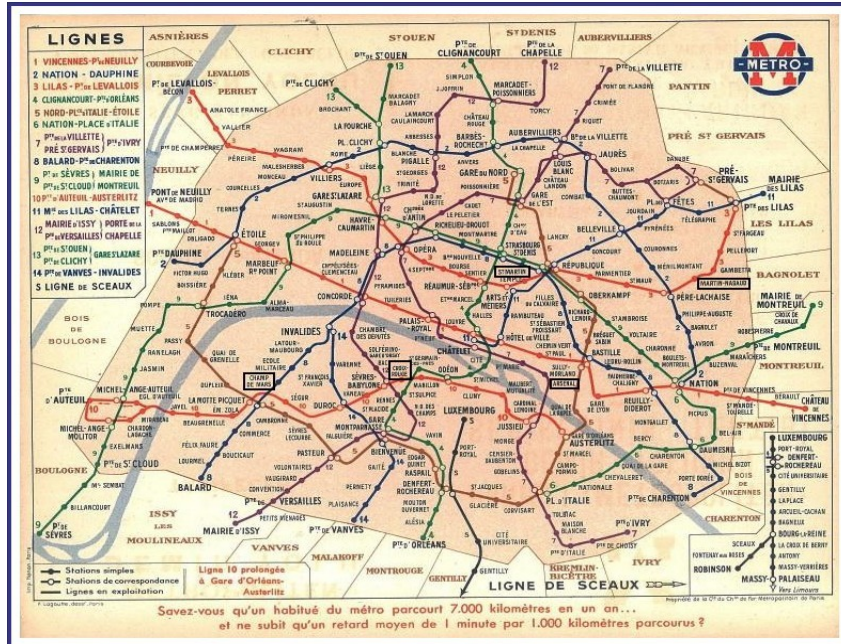
A photograph of a concrete bridge with wooden pilings over a lake. The bridge has a concrete railing with vertical posts and horizontal rails. The water is calm, and the background shows a lush green forest. The text 'ÉPURER POUR MIEUX VOIR' is overlaid in white, bold, sans-serif font.

ÉPURER POUR
MIEUX VOIR

LA CARTE DU MÉTRO PARISIEN SOUS DIFFÉRENTES FORMES

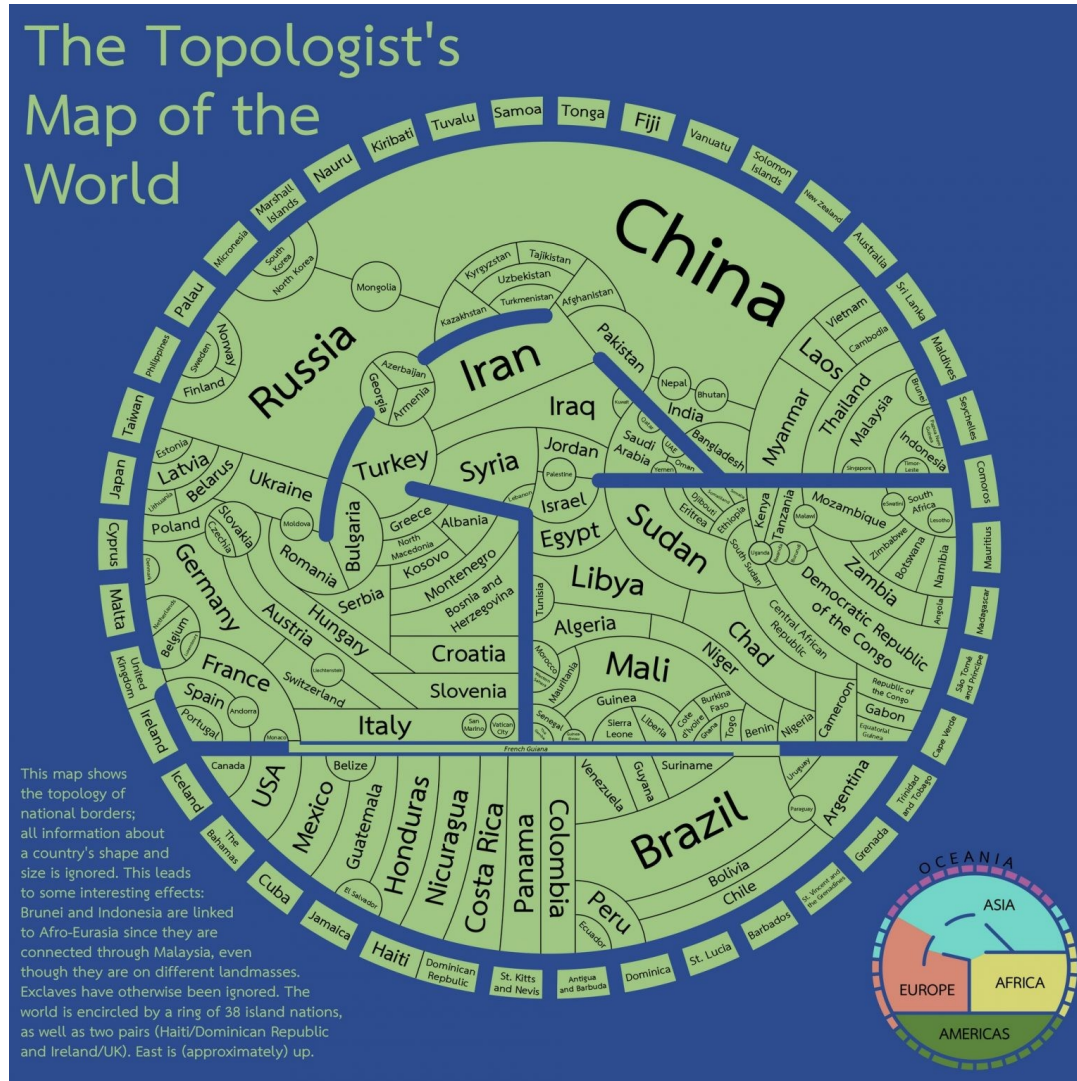
1900

2003



<http://belairsud.blogspotspirit.com/archive/2015/05/23/le-vrai-plan-du-metro-3047945.html>

QUAND SEULS COMPTENT LES VOISINS

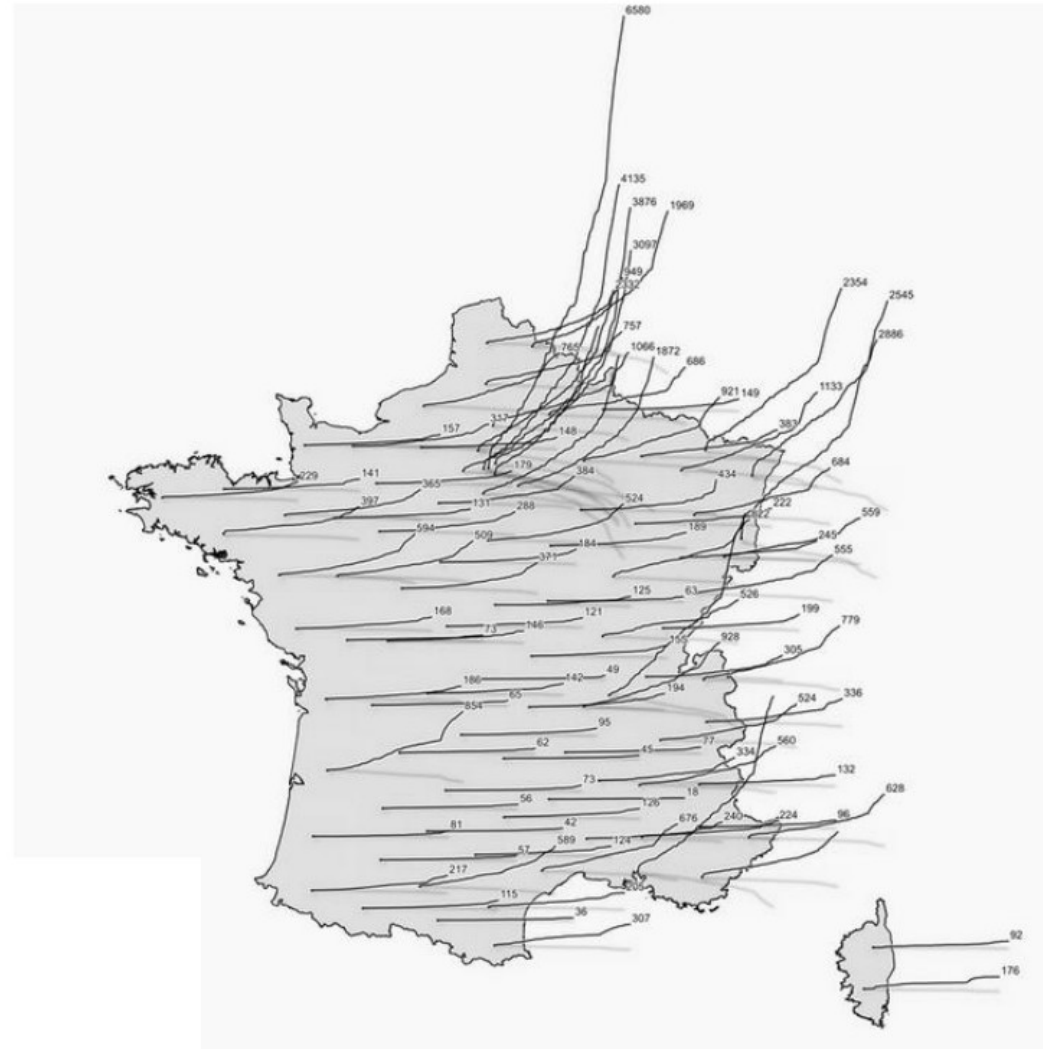


<https://vividmaps.com/the-topologists-map-of-the-world/>

A concrete pier with a wooden railing extends over a body of water. The pier is supported by several wooden posts. The railing is made of concrete posts and horizontal rails. The water is calm, and the background shows a dense forest of green trees. The word "CHIMÈRES" is overlaid in white, bold, sans-serif capital letters across the center of the image.

CHIMÈRES

Nombre + Temps + Position



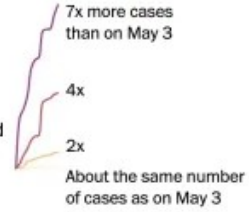
Mathieu Rajerison -
<https://datagistips.hypotheses.org/488>

Change in reported cases since May 3

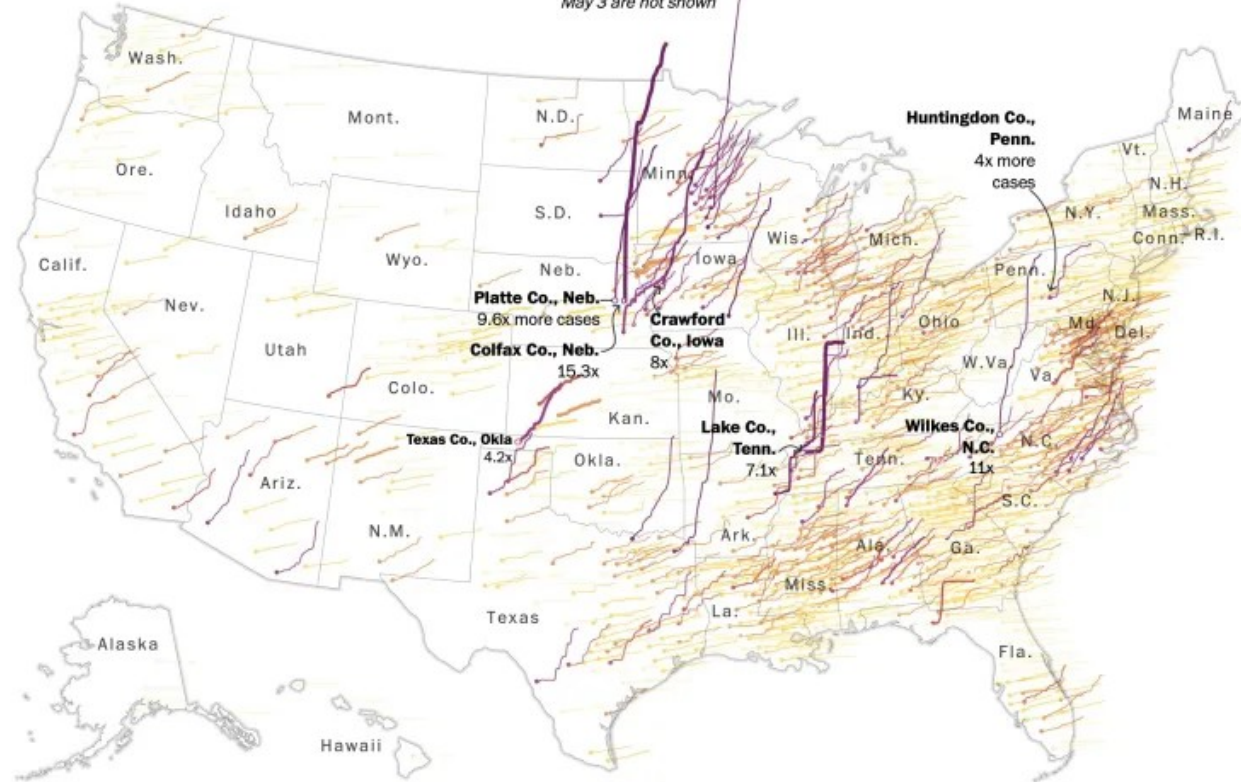
Line thickness shows the current number of cases relative to county population

Less → More

Line height and color show change in reported cases relative to May 3.



Counties with no cases on May 3 are not shown



Mots

+

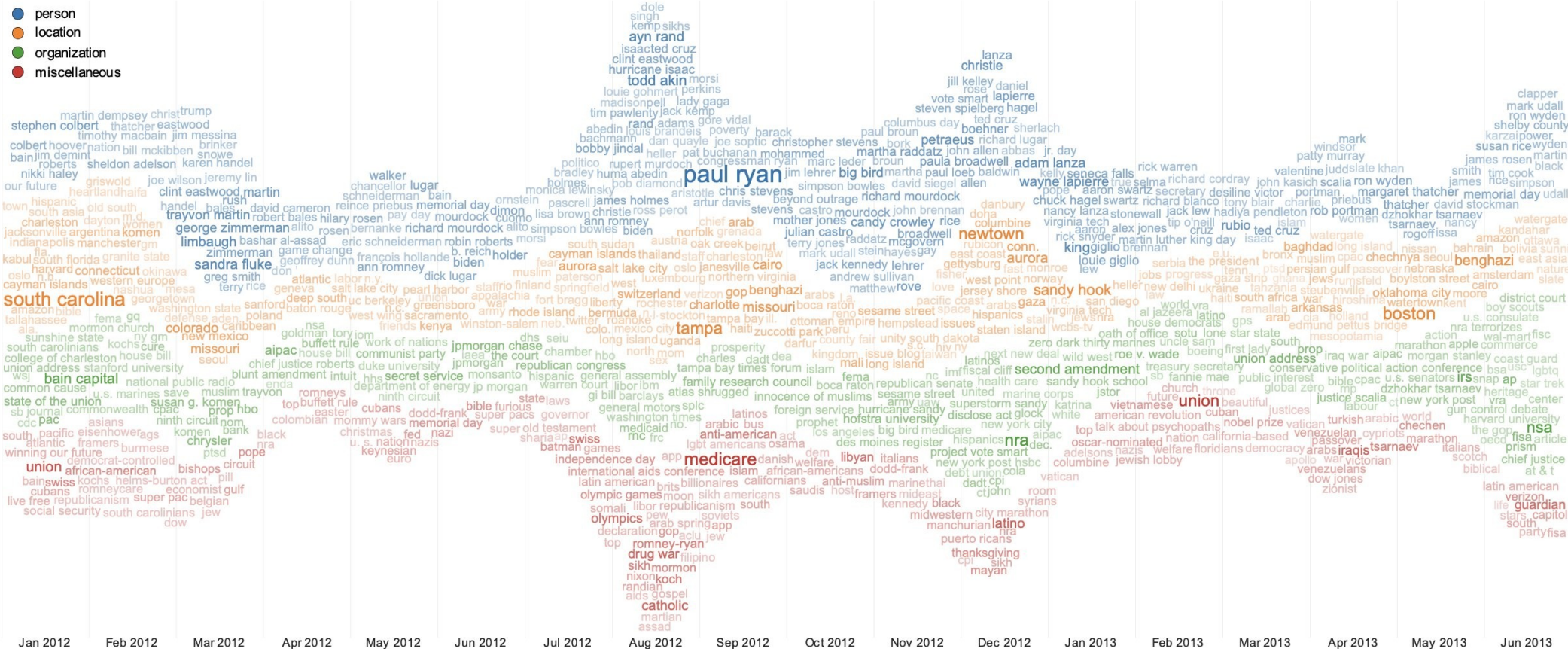
Quantité

+

Temps

+

Groupe

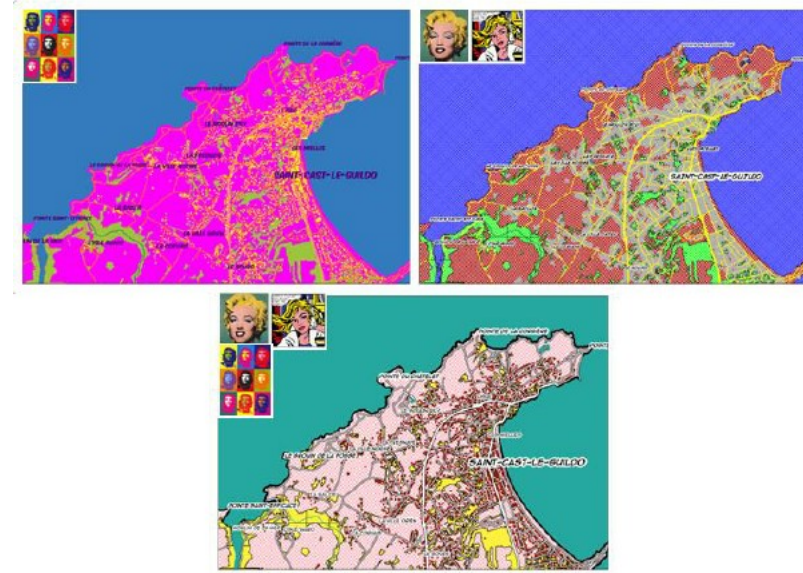
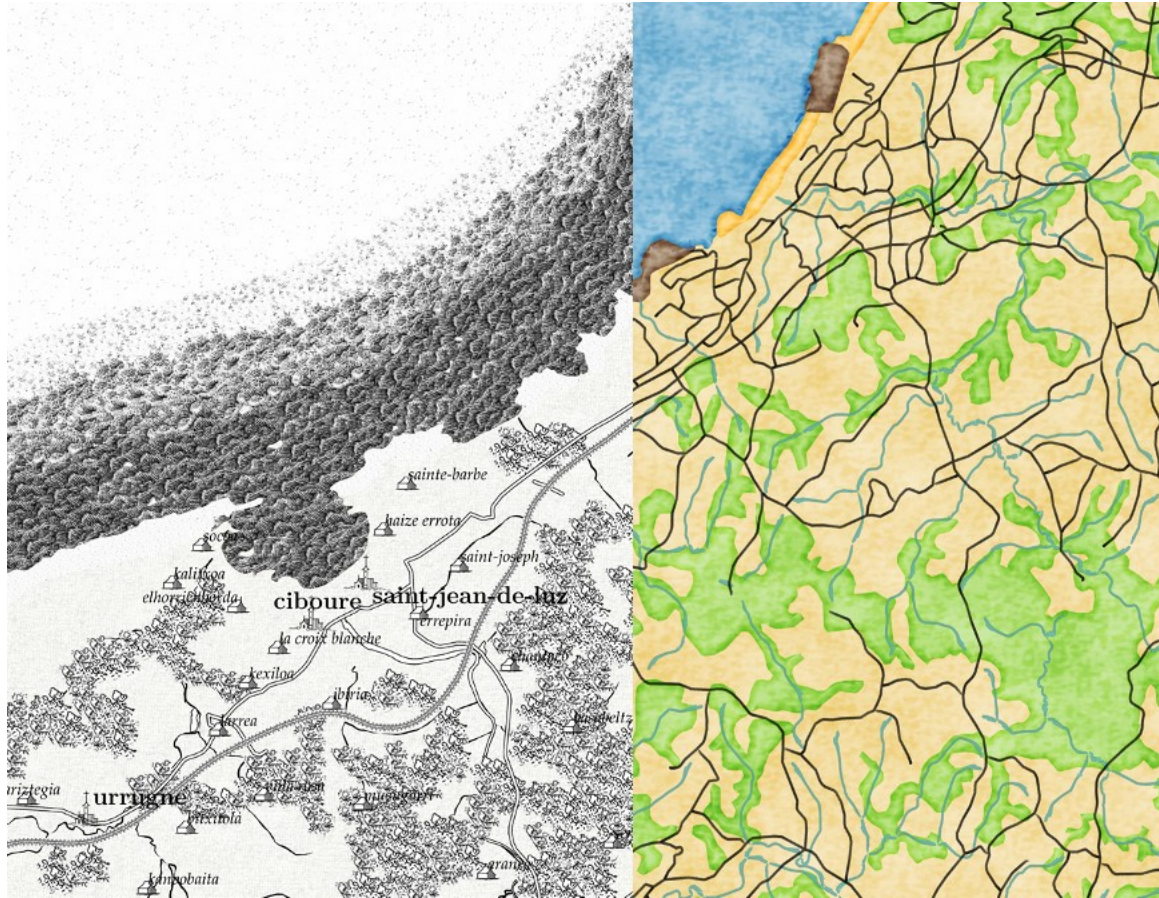


https://twitter.com/R_Graph_Gallery/status/1668994363681132547/photo/1

A photograph of a concrete bridge with wooden pilings over a lake. The bridge has a concrete railing with vertical posts and horizontal rails. The water is calm, and the background shows a grassy bank and dense green trees. The text "ALLER VERS L'ART" is overlaid in white, bold, sans-serif font across the center of the image.

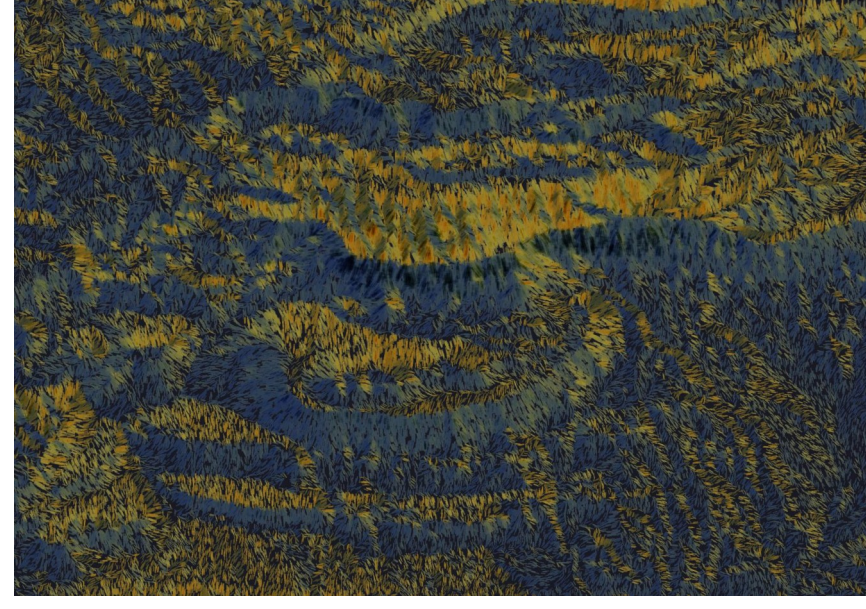
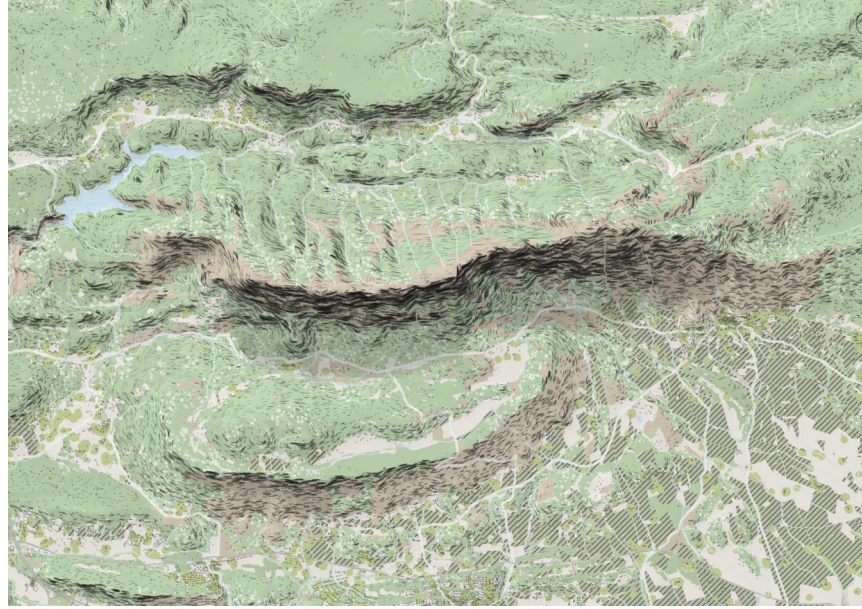
ALLER VERS
L'ART

EMPRUNTER LE STYLE D'ARTISTES CONNUS



<https://www.lemonde.fr/blog/binaire/2019/12/16/les-cartes-cest-trop-style/>

EMPRUNTER LE STYLE D'ARTISTES CONNUS



La Sainte Victoire – Mathieu Rajerison (QGIS)

LES ÉCHANGEURS AUTOROUTIERS



Varna, Bulgaria



Bern, Switzerland



Washington, DC, United States



Brunn am Gebirge, Austria



Kowloon Bay, Hong Kong



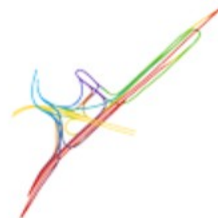
Arlington, Virginia, United States



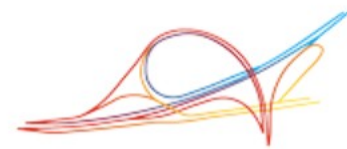
New York City, New York, United States



Detroit, Michigan, United States



Santiago, Chile



İzmir, Turkey



Vienna, Austria

DE LA DATA À L'ART

DATA TO ART

HOME

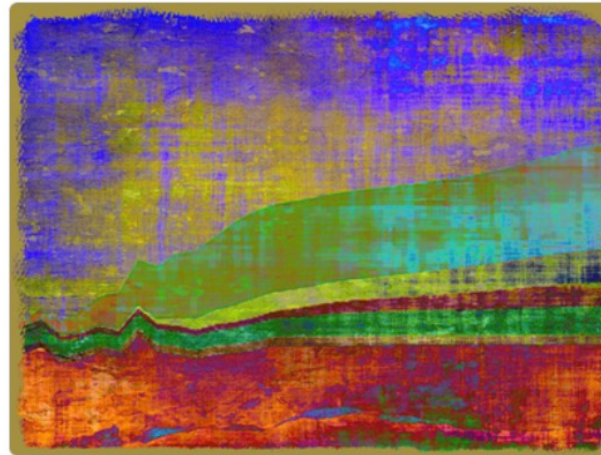
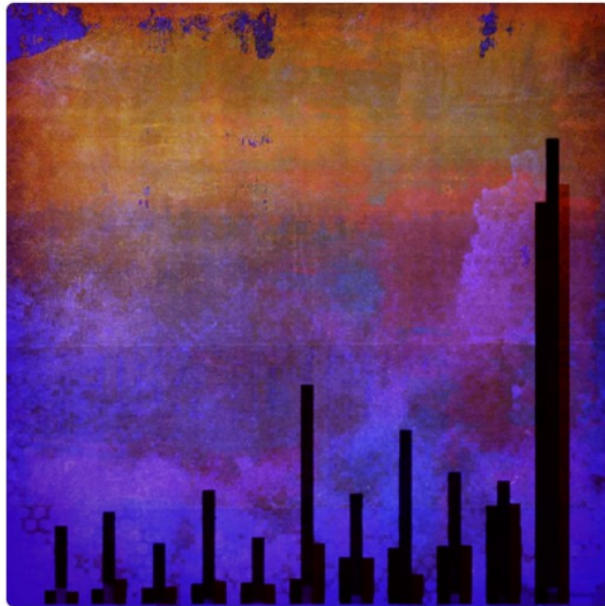
ARTIST

EXPOSITION

ORDER

ABOUT

CONTACT



Data to Art is a project made to promote art made from Data.

It is currently a *work in progress*, but will be made available soon.

If you want to be part of the website, please send me your artwork at yan.holtz.data@gmail.com.



<http://www.data-to-art.com/>

A photograph of a concrete bridge with wooden pilings over a lake. The bridge has a concrete railing with vertical posts and horizontal rails. The water is calm, and the background is a dense forest of green trees. The word "MÉTAPHORES" is overlaid in large, white, sans-serif capital letters across the center of the image.

MÉTAPHORES

UN VENT DE MIGRATIONS RÉSIDENTIELLES

Wind, a Tribute To Tobler

Sous-population :

A propos

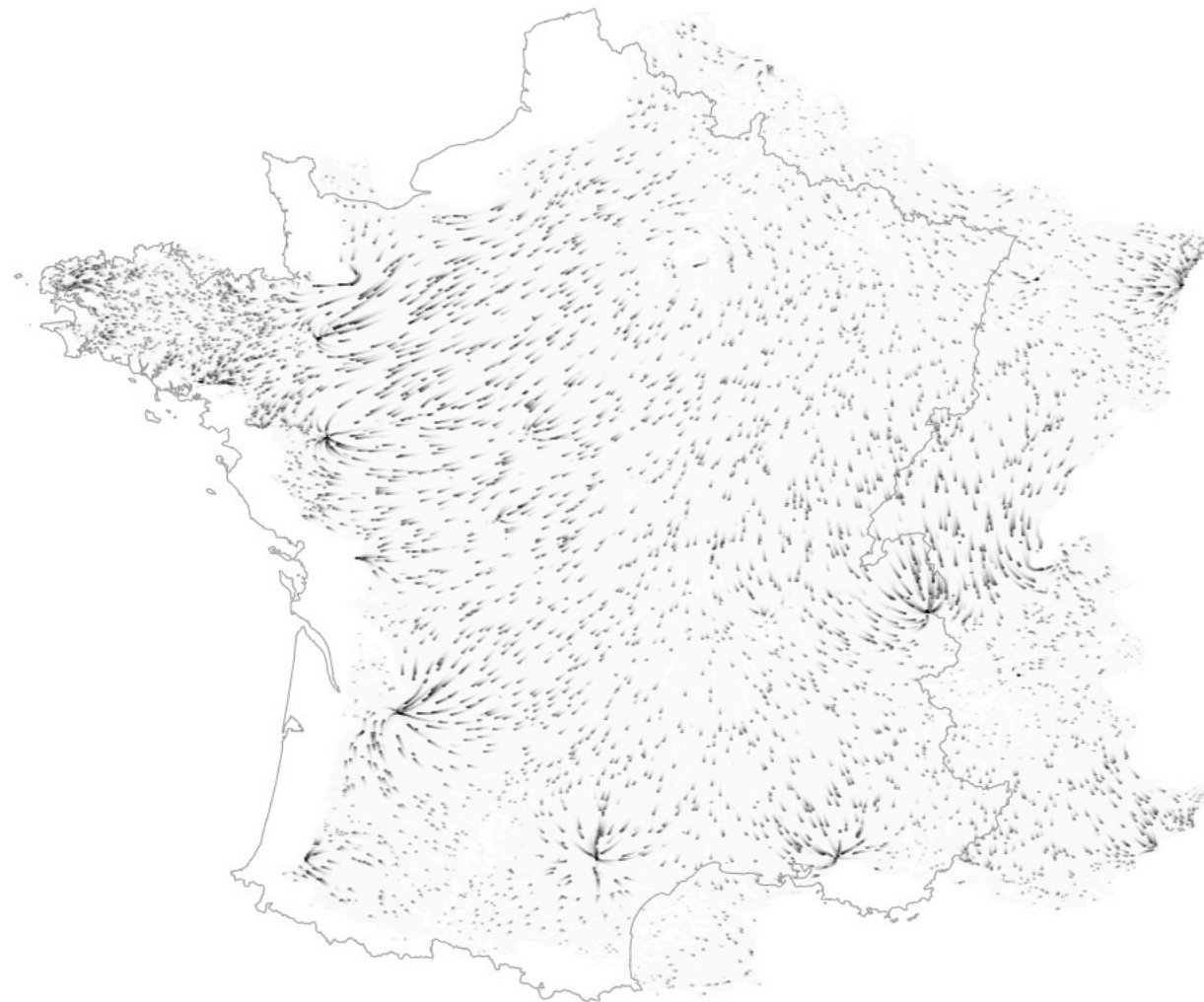
Cette carte présente une visualisation des migrations résidentielles des Français en 2016 suivant la catégorie socio-professionnelle et le sexe (n'hésitez pas à changer de catégorie avec le menu). Les données sont issues du recensement de la population et diffusées par l'INSEE. Pour établir ces cartes nous avons mis en œuvre [une méthodologie développée \[1 \]](#) par [Waldo Tobler](#) qui re-construit un champ vectoriel à partir de données de migrations et permet ainsi de visualiser les flux et les courants sous-jacents aux soldes migratoires observés. Cette méthode s'appuie sur la résolution d'une [équation de poisson discrétisée](#) (dans notre cas de figure la discrétisation s'appuie sur des mailles de 2,5 km) qui permet de reconstruire un potentiel d'attractivité pour chacune des mailles à partir des soldes migratoires observés en chacune des communes françaises. [Ce post de blog](#) vous donnera plus de détails. Un package R bientôt disponible permettra de réaliser ce traitement. Enfin, un ensemble de particules est simulé pour permettre de visualiser ce champ.

Ces cartes vous donnent à voir en un coup d'œil l'attractivité de Paris pour les cadres, la mobilité à destination des pôles urbains des étudiants, ou l'attrait de la côte atlantique pour les retraités. Si ces données vous intéressent, je vous encourage à aller regarder les travaux ([rapport](#), [synthèse interactive](#)) de l'observatoire des territoires.

Ce travail a été réalisé dans le cadre d'un projet de recherche pluri-disciplinaire [TTT \(Tribute To Tobler\)](#).

@comeetie, 2020

[1] [Tobler, W.R. \(1981\). A Model of Geographical Movement, Geographical Analysis, 13: 1-20. doi:10.1111/31538-4632.1981.tb00711.x](#)



Archipels de prospérité



Arthur Rajenica



DÉTOURNEMENTS

CE QUE L'ORIENTATION DES RUES DE PARIS NOUS DIT DE SON HISTOIRE



Mathieu Rajerison - <https://www.slate.fr/story/96387/orientation-rues-paris-histoire>

CE QUE L'ORIENTATION DES RUES DE PARIS NOUS DIT DE SON HISTOIRE



EXAMINER LES MÉLANOMES COMME DES TÂCHES URBAINES



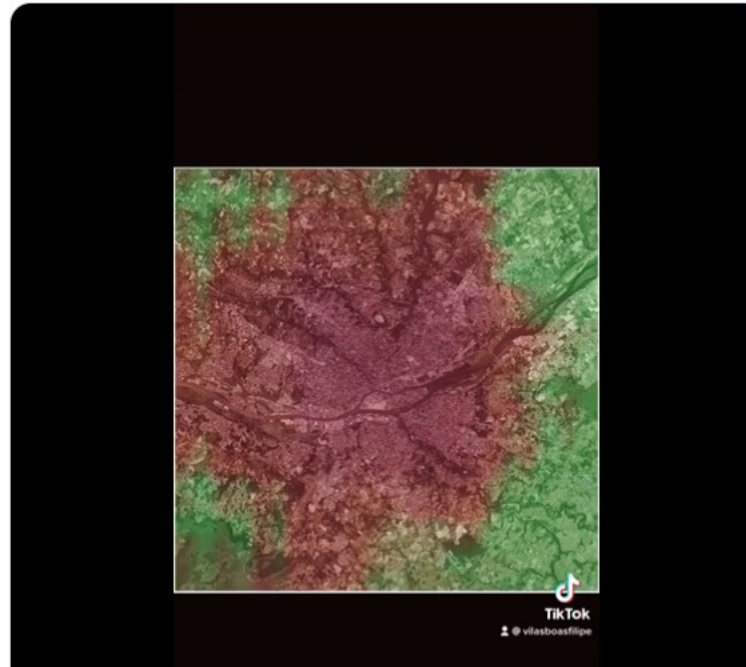
Filipe Vilas-Boas
@VilasBoasFilipe



J'utilise un algorithme de détection des mélanomes pour examiner la peau de la #France. L'artificialisation des sols est interprétée comme un cancer.

#melanopolis
#geodermatology

Résidence en cours @IGNFrance
#aiart #ecoart



<https://mobile.twitter.com/VilasBoasFilipe/status/1618989114464043008>



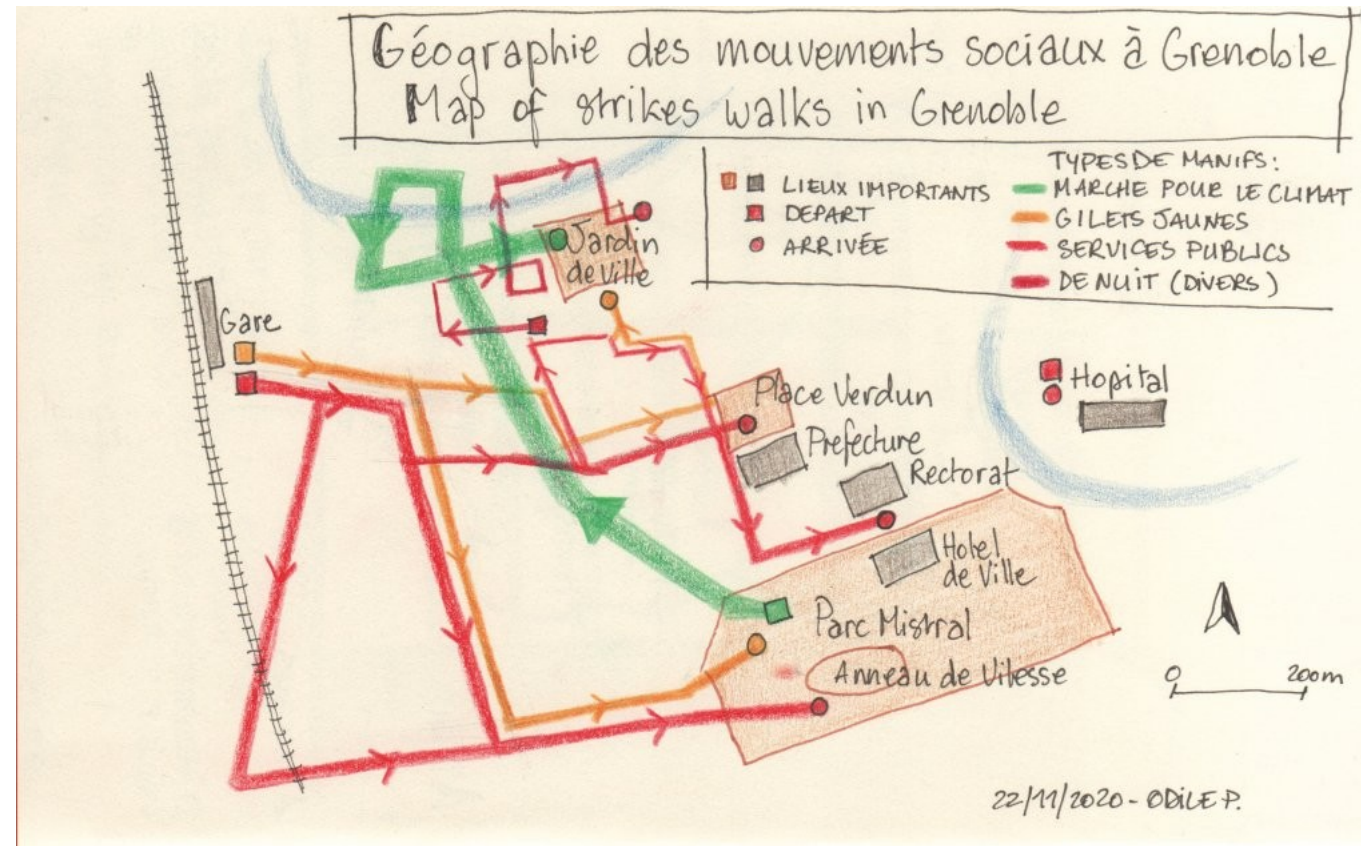
SENSIBLE

RELATER SA JOURNÉE EN GRAPHIQUES



<http://www.dear-data.com/theproject>

PHIL REKA



<https://twitter.com/visionscarto/status/1693859350865932720>

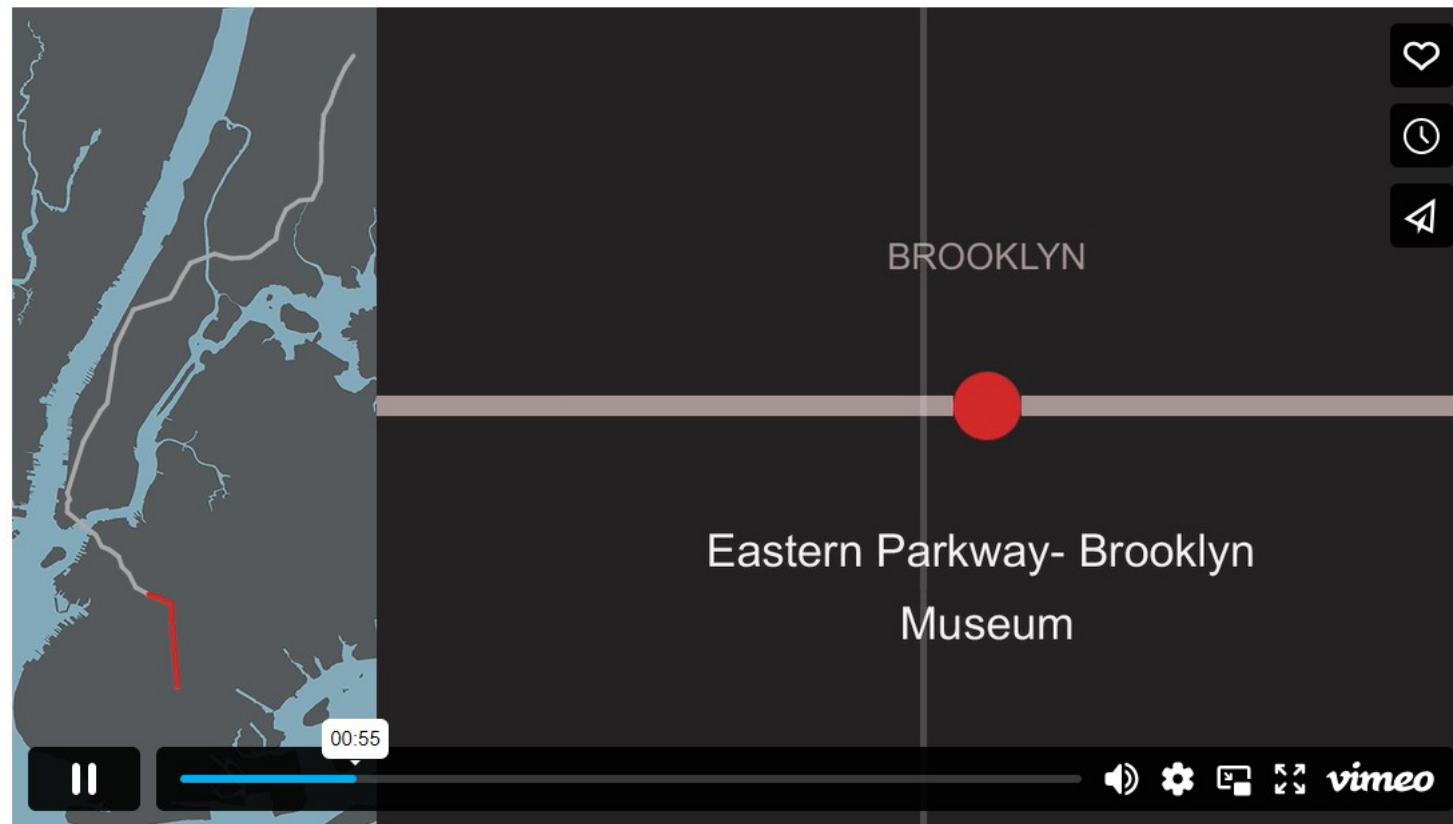
A photograph of a concrete bridge with a wooden railing, supported by several wooden pilings over a body of water. The background shows a lush green forest. The word "SONORE" is overlaid in large, white, sans-serif capital letters across the center of the image.

SONORE

LES INÉGALITÉS À NYC SONIFIÉES

Two Trains

Sonification of Income Inequality on the NYC Subway

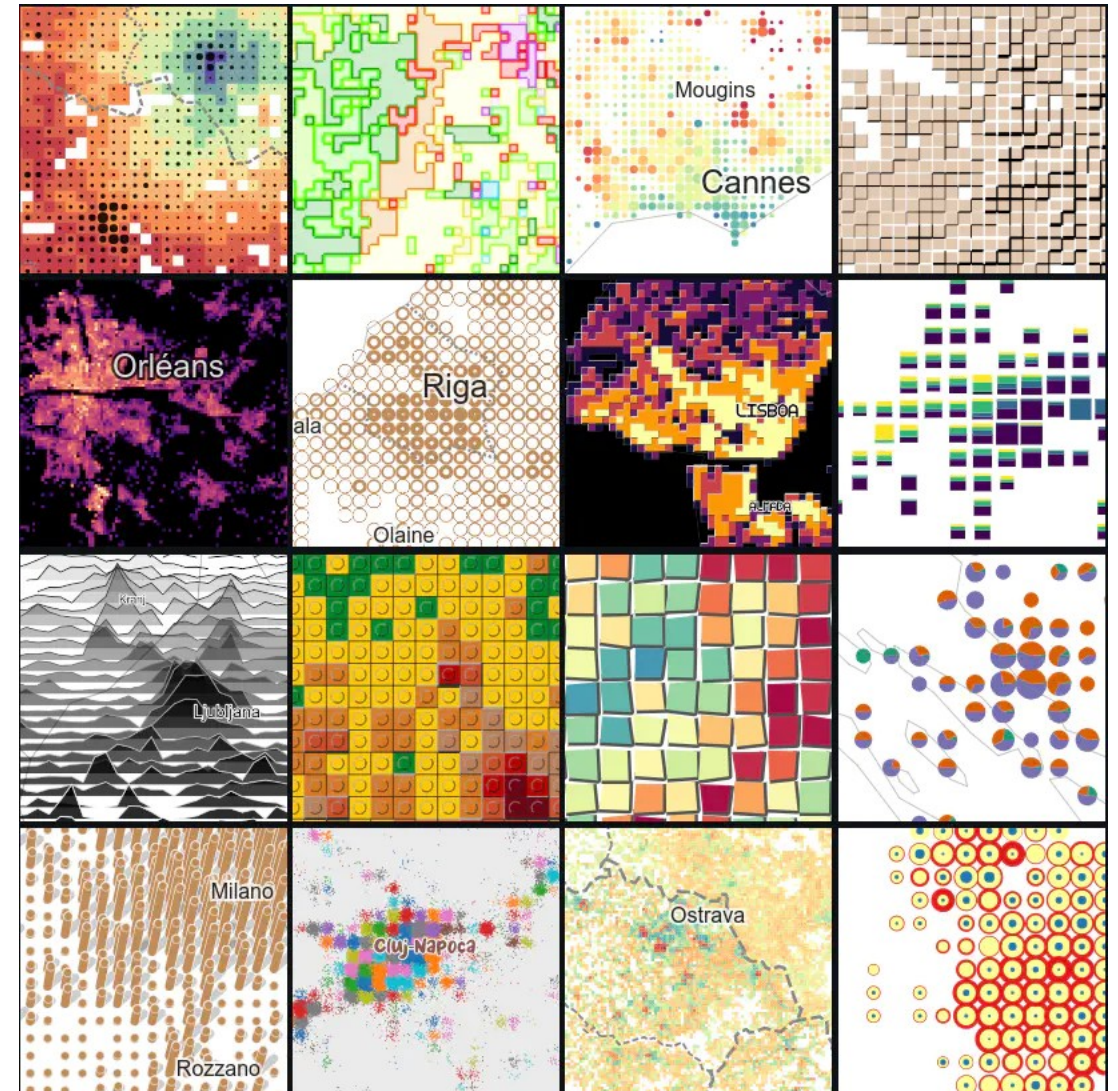
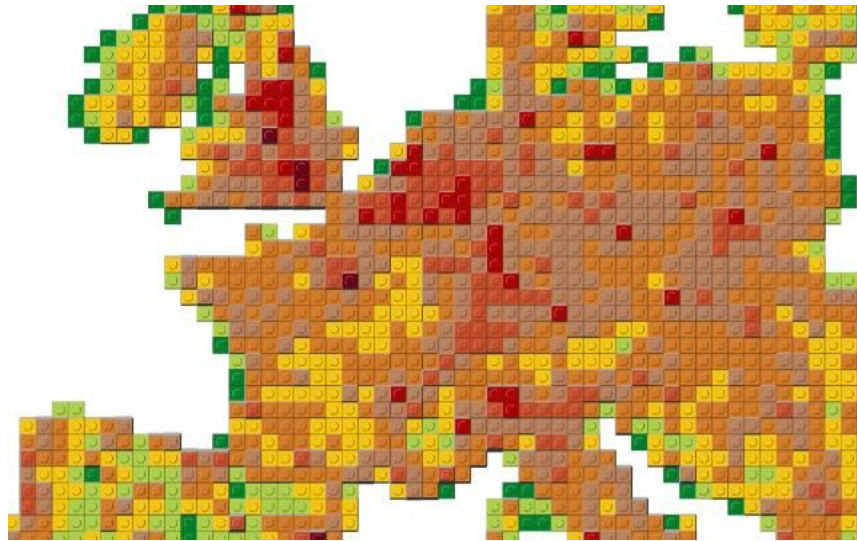


<https://datadrivendj.com/tracks/subway/>

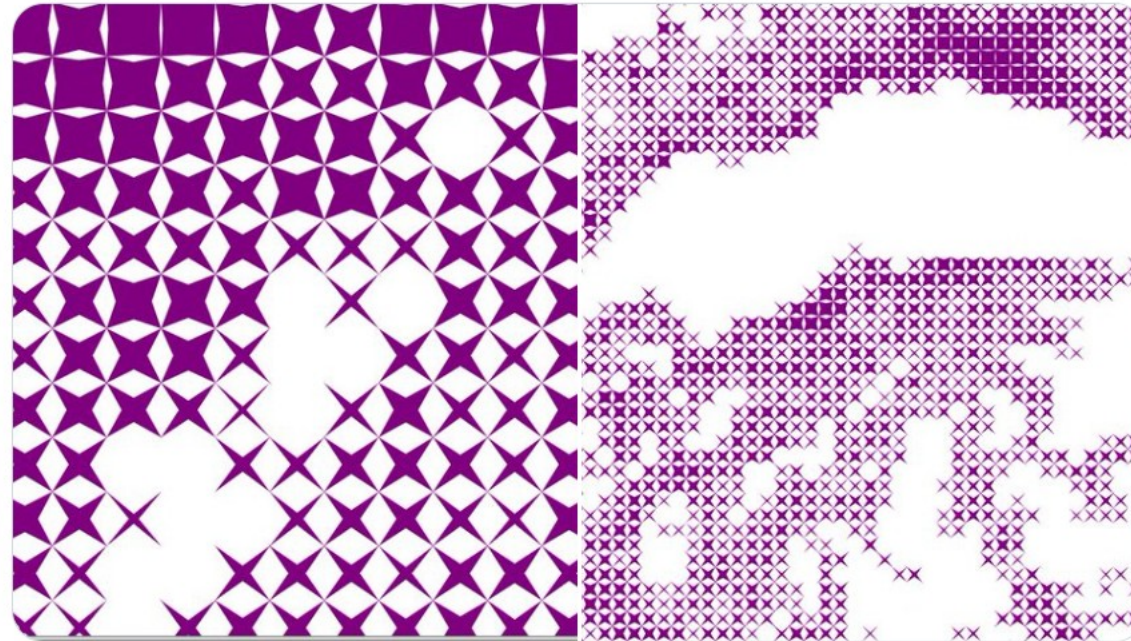


VARIATIONS

AUTOUR DE LA GRILLE



LE STYLE NINJA



<https://twitter.com/julgaf/status/1673742759721680912>

A photograph of a concrete bridge with wooden pilings over a lake. The bridge has a concrete railing with vertical posts and horizontal rails. The water is calm, and the background shows a lush green forest. The text 'LE TERRITOIRE NUMÉRISÉ' is overlaid in white, bold, sans-serif font, centered on the bridge.

LE TERRITOIRE
NUMÉRISÉ

JUMEAUX AUGMENTÉS



<https://twitter.com/alasarr/status/1656680037368893441?s=20>

A photograph of a concrete bridge with wooden pilings over a lake. The bridge has a concrete railing with vertical posts and horizontal rails. The water is calm, and the background shows a lush green forest. The text "INTELLIGENCE ARTIFICIELLE" is overlaid in white, bold, sans-serif font, centered on the bridge.

INTELLIGENCE
ARTIFICIELLE

IA GÉNÉRATIVE



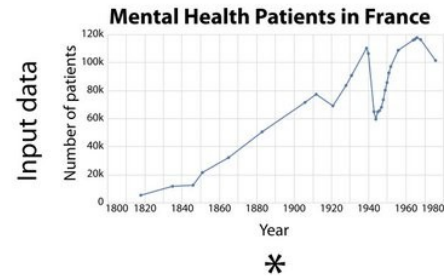
https://www.reddit.com/r/dndai/comments/x272jy/using_img2img_to_create_dd_maps/

TERRITOIRES RÊVÉS



<https://archandai.org/2021/02/17/alexander-carter-urban-morphology-venice-biennale/>

TRANSFERT DE STYLE



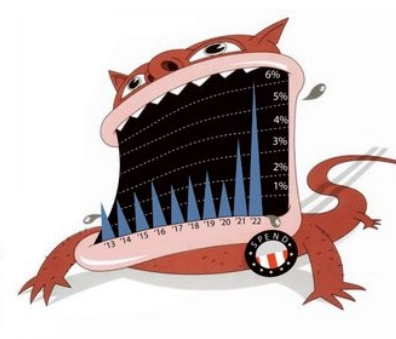
Semantically aligned image



=

=

Generated image



DATAVIZ GÉNÉRATIVES

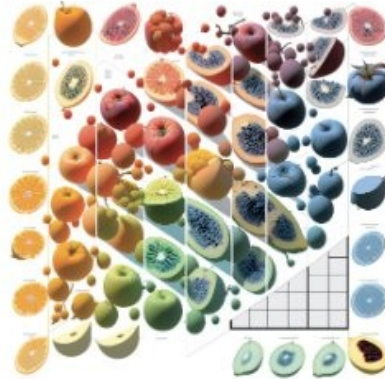
Treemap

"A treemap made of trees"



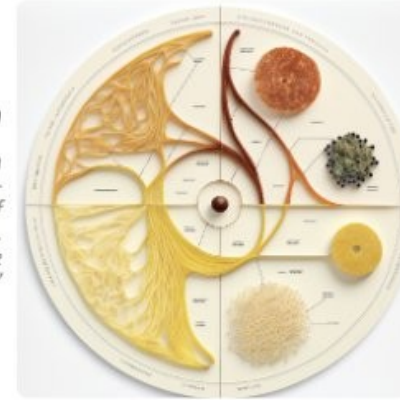
Scatterplot

"Should visualization researchers eat from the low-hanging fruit of generative models and accept the consequences?"



Chord diagram

"A chord diagram data visualization made of spaghetti, pasta, off-white background"



Network of city connections

"Data visualization of a graph or network as canals in a city, simplified stylish metro map"



Time series

"Time series data visualization, modernist, 1910 art, minimalistic"

Map

"A map of food traditions in Italy"



Pie chart

"Medieval illuminated manuscript data visualization about pizza"



Made with Midjourney